

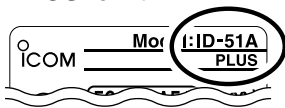
- ◇ This cloning software is designed for data entry, settings, and cloning of the ID-51A/E VHF/UHF TRANSCEIVER.
- ◇ The CS-51PLUS has a Help file to describe functions and operation.

■ System requirements

To use this cloning software, the following items and computer systems are required:

• Transceiver

The ID-51A/E with a serial number seal that has "PLUS" on it.



The illustration above shows the ID-51A version.

• Operating System (OS)

- Microsoft® Windows Vista® (32/64bit)
- Microsoft® Windows® 7 (32/64bit)
- Microsoft® Windows® 8 (32/64bit)*
- Microsoft® Windows® 8.1 (32/64bit)*
- *Except for Microsoft® Windows® RT.

NOTE:

These instructions are based on using Microsoft® Windows® 7.

• Others

- Data cable + a USB port
- OR
- microSD card + a memory card reader or memory card slot

<Data cable + a USB port>

- Optional OPC-2218LU DATA CABLE
- OR
- Optional OPC-2350LU DATA CABLE
- A USB 1.1 or 2.0 port

<microSD card + a memory card reader or memory card slot>

- microSD card (purchase separately)
- Memory card reader or Memory card slot to read the microSD card (purchase separately)

■ Usable microSD card

The microSD and microSDHC cards are not available from Icom. Purchase separately.

Icom has checked operation with the following microSD and microSDHC cards.

(As of August 2014)

Brand	Type	Memory size
SanDisk®	microSD	2 GB
	microSDHC	4 GB
		8 GB
		16 GB
		32 GB

- Through the rest of this document, the microSD card and a microSDHC card are simply called microSD cards.
- The performance of the cards listed above is not guaranteed.

■ USB driver installation

To use the OPC-2218LU DATA CABLE or the OPC-2350LU DATA CABLE, you must install a USB driver. The latest USB driver and installation guide can be downloaded from the Icom website.

Read the guide carefully, before installing the driver.

NOTE:

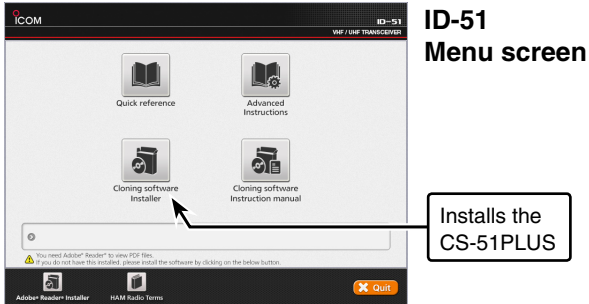
- **DO NOT** connect the transceiver to the PC with the OPC-2218LU until the USB driver installation has been completed.
- The driver is not supported by the Windows® automatic recognition system.

■ Software installation

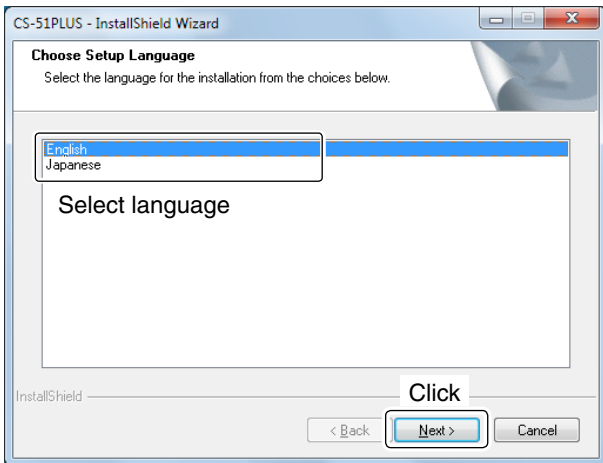
When installing the software, log in as the **administrator**.

- ① Make sure no other applications are running.
- ② Insert the CD into a CD drive.
- ③ Double-click “Menu.exe” on the CD.

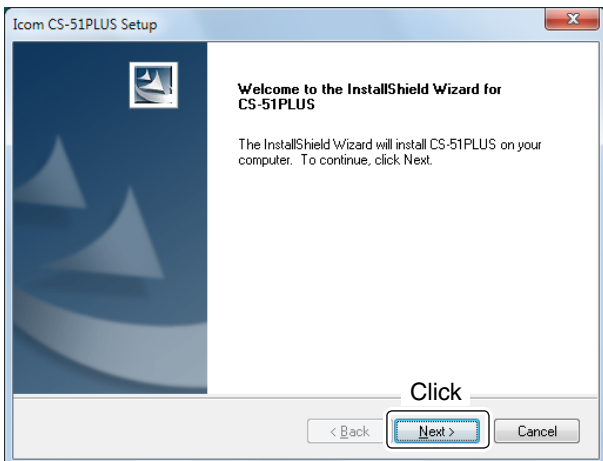
Depending on the PC setting, the Menu screen shown below is automatically displayed.



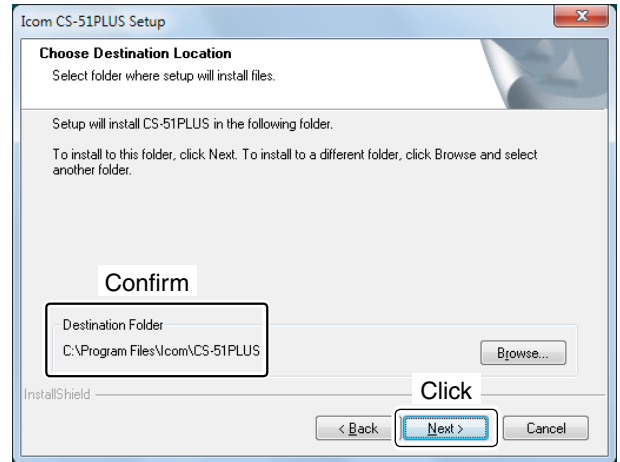
- ④ Click [Cloning software Installer].
 - If “User Account Control” appears, click [Yes] to continue.
- ⑤ “Choose Setup Language” appears. Select ‘English’ or ‘Japanese,’ and then click [Next>].
 - In this document, the ‘English’ option is used.



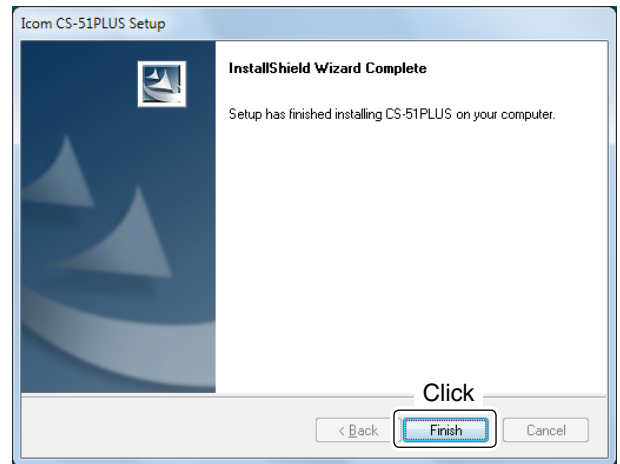
- ⑥ “Welcome to the InstallShield Wizard for CS-51PLUS” appears, and then click [Next>].



- ⑦ “Choose Destination Location” appears, and then click [Next>].
 - If desired, click [Browse...] to select another destination folder before clicking [Next >].



- ⑧ After the installation is completed, “InstallShield Wizard Complete” appears, and then click [Finish].



- ⑨ Click [Quit] on the main menu.
- ⑩ Eject the CD.
- ⑪ A program group ‘CS-51PLUS’ appears on the program menu, and a ‘CS-51PLUS’ shortcut icon appears on the desktop.
 - You can uninstall the cloning software using “Uninstall a program” in the Windows Control Panel.

Refer to the Help file of the cloning software for assistance with the functions or settings. To open the Help file, click [Help] in the top menu of the cloning software and select “Contents,” or simply push the [F1] key of the PC’s keyboard.

Cloning from a PC using a microSD card

To clone from a PC using a microSD card, follow the steps described below.

Step 1 Insert a microSD card into your PC's card reader or card slot

Step 2 Make the initial set up

Step 3 Cloning (page 4)

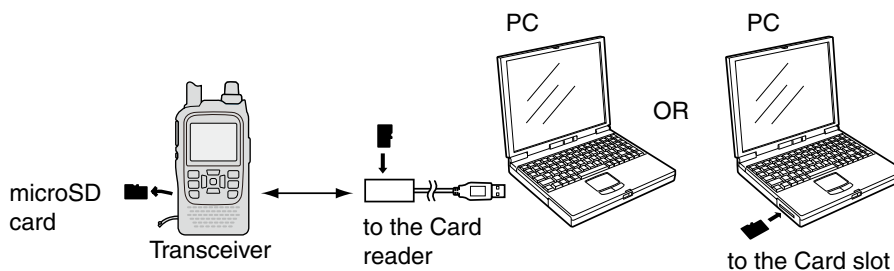
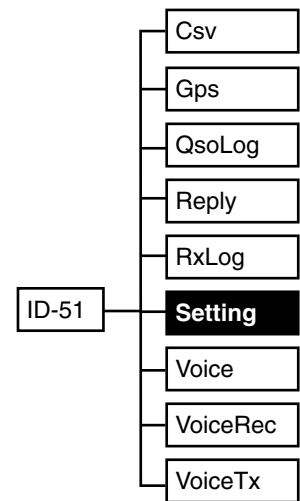
■ microSD card and a PC connection

NOTE: If you use a brand new microSD card, first format the card. See section 2 of the ID-51A/E Basic Instructions for details.

- ① Save the transceiver's settings data in the "icf" file format onto the microSD card. Open the "Save Setting" on the transceiver's MENU screen to save. (MENU > SD Card > **Save Setting**)
- ② Turn OFF the power, and remove the microSD card from the transceiver.
- ③ Insert the card into the microSD card slot of the PC or the microSD card reader, as illustrated below.
- ④ Copy the transceiver's setting data (ICF file), stored in the [Setting] folder of the card to a PC local folder.

◇ About the microSD card's folder composition

The folder composition on the microSD card is shown to the right. The transceiver's setting data (ICF file) is stored in the [Setting] folder.

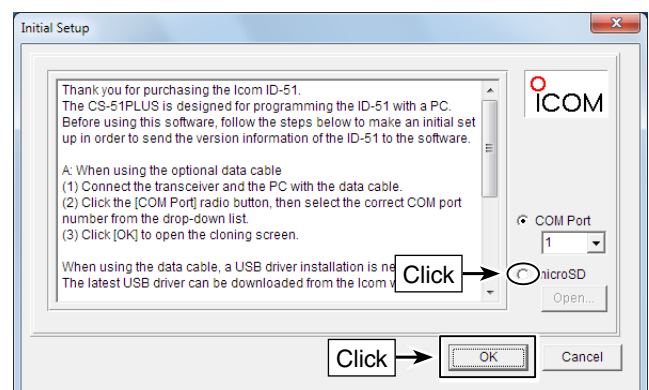


■ Initial setup window

Before using this software, read the instructions thoroughly, and follow the steps below to make the initial setup in order to send the transceiver version information.

NOTE: When the transceiver version information is not correctly sent to the software, some items may not appear on the software sheets.

- ① Click the [microSD] radio button.
- ② Click [Open...] to show the data file selection window. Select the ICF file, saved in "microSD card and a PC connection," as described above.
- ③ Click [OK] to read the selected file, and open the cloning window.



■ Programming information

- To prevent data loss, you should first copy the settings data (ICF file) on the card to the PC. After copying, read the data into the cloning software, before editing or entering new software parameters.
- Before editing or entering new data, make a backup file onto your PC. A backup file allows easy restoring even if the setting data in the microSD card is accidentally deleted.
- Be sure to turn OFF the power before inserting or removing the microSD card.
- **NEVER** remove the microSD card, detach the battery pack/case, or power OFF the transceiver, while reading or writing data to or from the microSD card. It will cause the data to be corrupted or damage the card.

■ Cloning operation

To clone the memory channels, MENU item settings and repeater list, input the CS-51PLUS CLONING SOFTWARE, using a microSD card, follow the steps below.

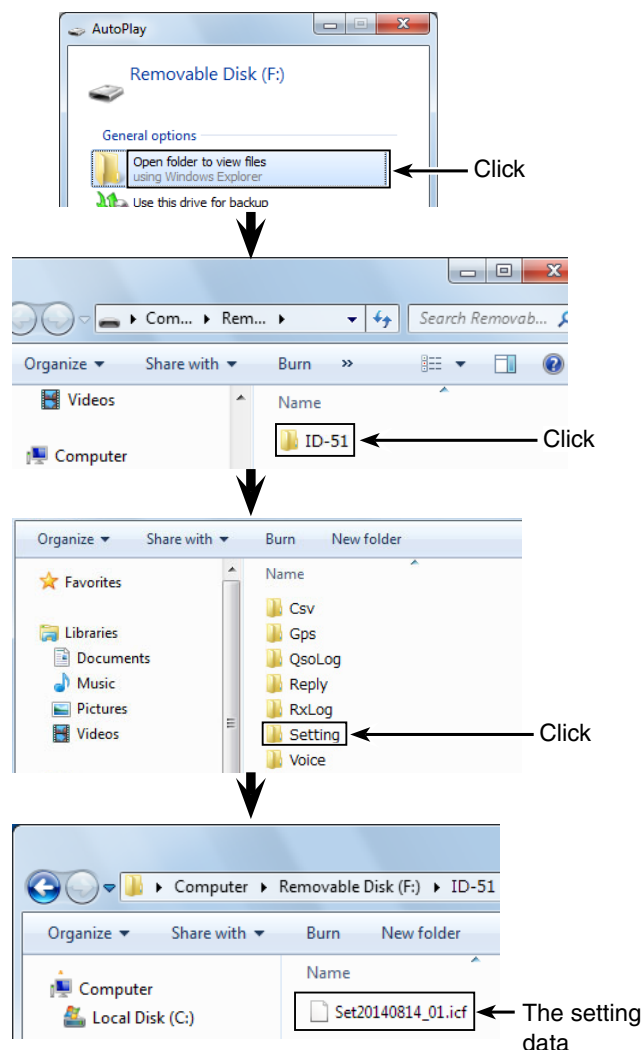
- ① Set the desired memory channels, MENU item settings and the repeater list in the CS-51PLUS CLONING SOFTWARE, and then save them in an “icf” file format in a folder on your PC.
- ② Copy the ICF file into the [Setting] folder in the [ID-51] folder on the microSD card.
- ③ Insert the microSD card that includes the ICF file into the slot of the transceiver, then load it to complete the cloning.
(MENU > SD card > **Load Setting**)

NOTE:

- After loading, the contents of the ICF file will overwrite the current data.
- The loading contents can be selected between “ALL,” “Except My Station,” and “Repeater List Only.” Select “Repeater List Only” to load only the repeater list into the transceiver.
- The original skip settings in your repeater list can be kept when loading. When “Keep ‘SKIP’ setting in Repeater List?” appears, select “YES” to keep the skip settings in the repeater list.
- See section 2 of the ID-51A/E Advanced Instructions for details.

- ④ Turn OFF the power, then turn it ON again to operate the transceiver with the loaded data.

Copying the ICF file in the PC into the microSD card



Cloning from a PC using an optional data cable

To clone from a PC using an optional data cable (OPC-2218LU or OPC-2350LU), follow the steps below.

Step 1 Connect the transceiver and PC using an optional data cable

Step 2 Make the initial set up

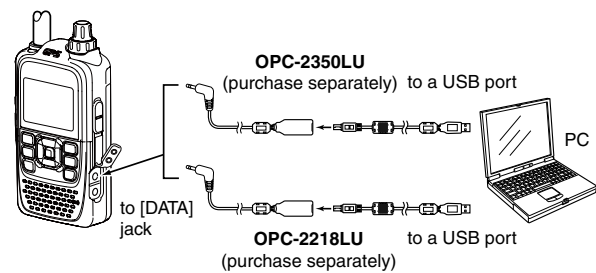
Step 3 Cloning (page 6)

NOTE:

Before reading or writing cloning data, the "DV Data TX" setting of the transceiver must be set to "PTT." Otherwise, when data is input from a PC through the [DATA] jack, the transceiver automatically transmits it.
(MENU > DV Set > DV Data TX)

■ Transceiver and a PC connection using an optional data cable

- ① Install the USB driver.
 - Download and install the latest USB driver from the Icom website.
See the OPC-2218LU or the OPC-2350LU instruction manual for details.
- ② Make sure the transceiver power is OFF.
- ③ Connect an optional data cable as illustrated to the right.
- ④ Push [⏻] to turn ON the transceiver.

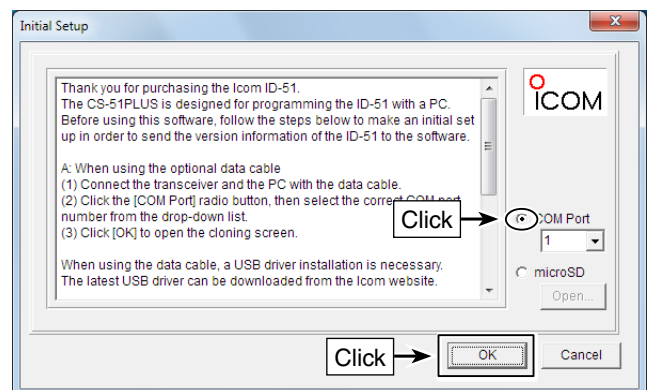


■ Initial setup window

Before using this software, read the instructions thoroughly, and follow the steps below to make the initial setup in order to send the version information of the transceiver to the software.

NOTE: When the version information of the transceiver is not correctly sent to the software, some items may not appear on the sheets.

- ① Click the [COM Port] radio button.
- ② Select the correct COM port number from the drop-down list, or directly enter the COM port number into the box.
 - See the "Driver Installation Guide" to check the COM port.
- ③ Click [OK] to open the cloning screen.






■ Programming information

- To prevent data loss, you should first read (download) all the transceiver's data before entering or editing parameters using the cloning software.
- Before editing or entering, make a backup file onto your PC. A backup file allows easy restoring even if the setting data in the transceiver is accidentally deleted.

- While reading or writing (uploading) cloning data, **NEVER** turn OFF the transceiver or the PC, and **NEVER** disconnect the cable. Otherwise, the data could be lost or deleted.

■ Cloning operation

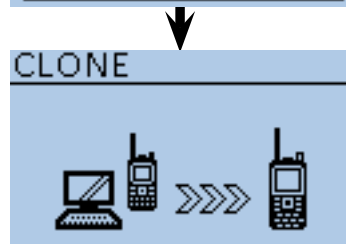
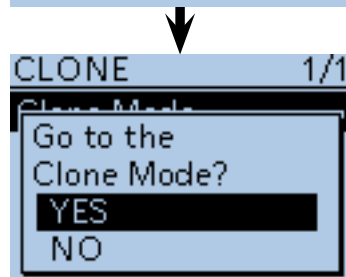
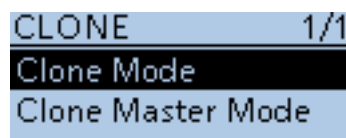
To clone the memory channels, MENU item settings and repeater list using an optional data cable, follow the steps as described below.

- ① Push [MENU] on the transceiver, and then follow the steps described below to display the clone mode. (MENU > Others > Clone > **Clone Mode**)
- ② Click , or select "Read <- TR" in the [Clone] menu to start reading the data from the transceiver. Also, click , or select "Open Ctrl+O" in the [File] menu to open the ICF file to write to the transceiver.
- ③ Program the settings for each function, using the CS-51PLUS.
 - See the Help file of the CS-51PLUS for assistance.
- ④ Click , or select "Write -> TR" in the [Clone] menu to write the programmed data into your transceiver.

/// **NOTE:** After writing, the programmed data will overwrite the current data.

- ⑤ After the reading is completed, the transceiver returns to the menu screen. After the writing is completed, the screen to the right will appear. Turn OFF the power, then turn it ON again to operate the transceiver with the loaded data.

The transceiver's display



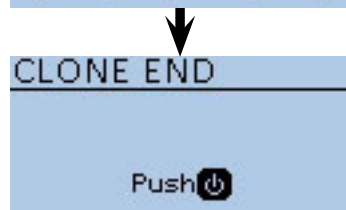
The Clone Mode display



When the PC starts reading the data from the transceiver.



When the PC starts writing the programmed data into the transceiver.



Cloning is complete.

Latest ICF file and CSV files downloading

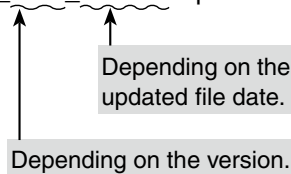
The latest ICF file and CSV files can be downloaded from the Icom website.

Access the following URL to download the latest data.
<http://www.icom.co.jp/world/support/download/firm/index.html>

① Right-click on the downloaded compressed file and select “Extract All...” to unzip it.

A “51P_USA_140725” folder will be created on the same place where the downloaded file is saved.

• **File Name:** 51P_USA_140725.zip



/// This instruction manual describes when the file name is “51P_USA_140725.zip,” for example.

For your reference:

The downloaded ZIP file includes:

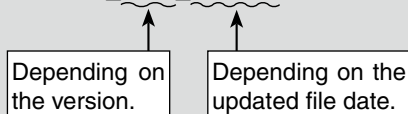
- Settings file (ICF file)
- Call channel (CSV file)
- GPS memory (CSV file)
- BC radio memory (CSV file)
- Repeater list (CSV file)
- Your (Destination) call sign memory (CSV file)

<Settings file (ICF file)>

All setting data of the transceiver is stored in the ICF file.

- See to the right to program.
- See pages 4 and 6 to clone.

File Name: 51P_USA_140725.icf

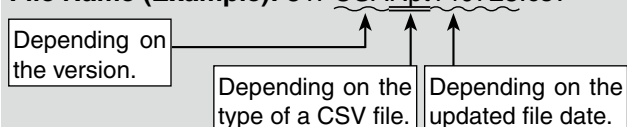


<Each CSV file>

The name of a CSV file represents the content.

- See page 9 to program.
- See page 8 to import.
- See page 9 to export.

File Name (Example): 51PUSARpt140725.csv




② Copy the settings file (ICF file) and CSV files contained in the downloaded ZIP file to a folder on your PC.

Entering data in the settings file

This section describes how to enter data in the downloaded settings file (ICF file).

1. Settings file (ICF file) editing

Before starting to enter, make an initial set up in order to send the version information of the transceiver to the software. (pp. 3, 5)

① Click  or select “Open Ctrl+O” in the [File] menu of the CS-51PLUS to open the ICF file, saved in “Latest ICF file and CSV files downloading” as described to the left.


② Program each setting for each function, using the CS-51PLUS.

- See the Help file of the CS-51PLUS for assistance.

NOTE:

You can edit the CS-51 ICF files with the CS-51PLUS. However, those files cannot be re-edited with the CS-51.

2. Settings file (ICF file) saving

➡ Click  or select “Save Ctrl+S” or “Save As...” in the [File] menu of the CS-51PLUS to save the edited file (ICF file) to a folder on your PC.

/// See pages 4 and 6 for about how to write the saved ICF file to the transceiver.

NOTE:

The ICF (Icom Cloning Format) file, including the default values, can be downloaded from the Icom website.

To reset the settings of the transceiver to their default values, copy the downloaded ICF file contained in the supplied CD of the transceiver, to a local PC folder, and then write it to the transceiver.


Importing the repeater list in a CSV format file

Read this section before importing the repeater list in a Comma Separated Values (CSV) format file to write the repeater information to the transceiver.

Other CSV files contained in the downloaded ZIP file can also be imported in the same procedure.

When an optional data cable is used:
The setting contents, except the repeater list, can be retained by doing the following procedures.

1. Reading the data from the transceiver

➔ Click , or select “Read <- TR” in the [Clone] menu to start reading the data from the transceiver.

▨ Before importing, make a backup file of all the transceiver’s data onto your PC to prevent data loss.

2. Repeater list import

① Select the “Repeater List” folder or each repeater group on the tree view screen of the CS-51PLUS.

② Click “Import” in the [File] menu, and then click “All...”.

• The repeater information in a CSV file will be imported, and sorted into all groups, according to the group number.

▨ **NOTE:** When “Group...” is selected, all repeater information in the file will be imported into the repeater group, selected in step ①.

▨ If you select the “Repeater List” folder in step ①, “Group...” cannot be selected.

③ The [Open] screen appears.

Select the CSV file, saved in “Latest ICF file and CSV files downloading” described on page 7, and then click [Open].

④ The “Import from the file” dialog appears, and then click [OK].

• If [Cancel] is selected, the importing will be cancelled.

⑤ The “Keep ‘USE(FROM)’ setting in Repeater List?” dialog box appears, and then click [Yes] or [No] to start importing.

• Yes: If the repeater call sign in your original repeater group is in the CSV file format, the original “USE(FROM)” settings will be kept when importing.

• No: Even if the repeater call sign in your original repeater group is in the CSV file format, the original “USE(FROM)” setting will be replaced when importing.

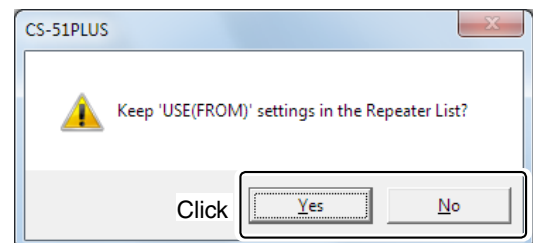
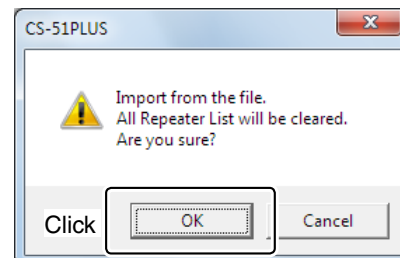
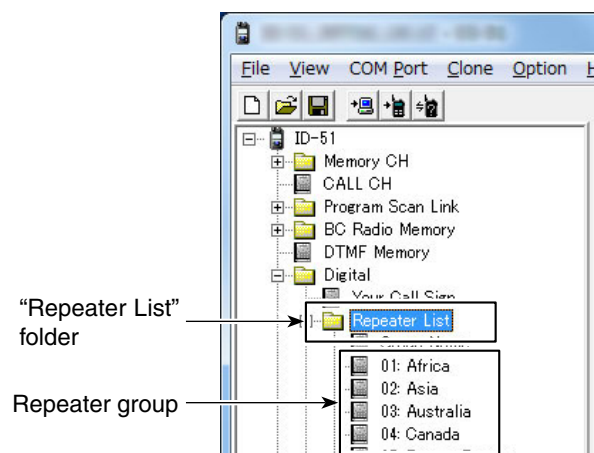
⑥ The repeater information of the repeater list is read to the CS-51PLUS.

• Import is complete.

▨ • See page 6 for details about how to write the imported repeater list to the transceiver.

▨ • See page 9 for details about how to program or export the repeater list.

<Tree view screen of the CS-51PLUS>



About the “USE(FROM)” setting

Select whether or not the repeater can be selected as an access repeater (FROM), when you rotate [DIAL]. If “NO” is selected, the repeater does not appear in the “FROM” selection, and is skipped during a DR scan.

Programming and Exporting the repeater list in a CSV format file

Read this section before programming and exporting the repeater list in a Comma Separated Values (CSV) format file.

1. Programming the Repeater list

- ① Select the desired repeater group in the “Repeater List” folder on the tree view screen of the CS-51PLUS.
- ② Program each item of the repeater list, using the CS-51PLUS.
 - See the Help file of the CS-51PLUS for assistance.

2. Exporting the Repeater list

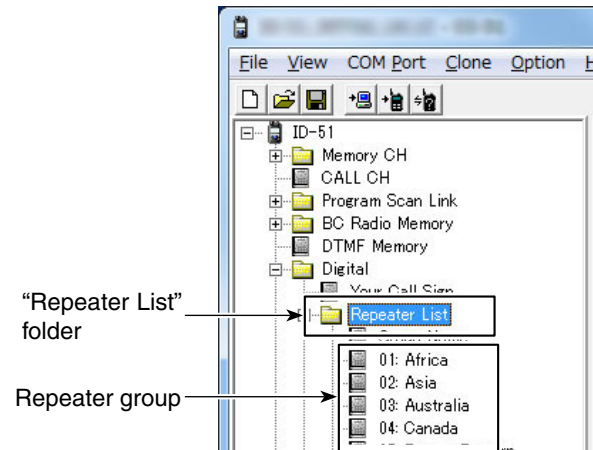
- ① Select the “Repeater List” folder or each repeater group on the tree view screen of the CS-51PLUS.
- ② Click “Export” in the [File] menu, and then click “Group...” or “All...”.

NOTE: If you select the “Repeater List” folder in step ①, “Group...” cannot be selected.

- Group...: Exports repeater information programmed in only the selected group.
- All...: Exports repeater information programmed in all groups.

- ③ When the “Save as” window appears, save the data in a CSV format using a individual file name. Then save it in a CSV format file to a folder on your PC, and the exportation is completed.

<Tree view screen of the CS-51PLUS>



Icom, Icom Inc. and the Icom logo are registered trademarks of Icom Incorporated (Japan) in Japan, the United States, the United Kingdom, Germany, France, Spain, Russia and/or other countries. Microsoft, Windows and Windows Vista are registered trademarks of Microsoft Corporation in the United States and/or other countries. All other products or brands are registered trademarks or trademarks of their respective holders.