



BOXCHIP

Android Firmware Build Upgrade Instruction

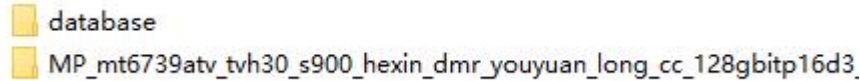
For S900 & A Series

Copyright ©2023 Boxchip Co., Ltd, all rights reserved

Jan. 2023



1. Download Android firmware package and unzip it, after unzip it should be as follow



2. Download MTK USB Driver and unzip it, please get at followed linkage

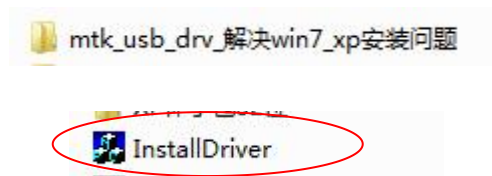
For Win10

https://www.dropbox.com/s/vr7hthwhpk1okl1/Driver_Auto_Installer_EXE_v1.1352.00.rar?dl=0

For Win7

https://www.dropbox.com/s/no0dh5ug2gavifj/mtk_usb_drv_%E8%A7%A3%E5%86%B3win7_xp%E5%AE%89%E8%A3%85%E9%97%AE%E9%A2%98.zip?dl=0

After unzip, it should be as follow



NOTE:

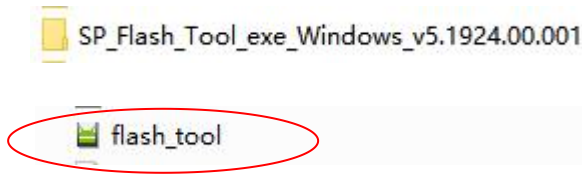
This step is using Windows 7 for the example. If you are using Windows 10, you may receive a system warning that the install has failed, please ignore the fail informing and go on with below steps.

3. Download the SP Flash Tool and unzip it, please get at followed linkage

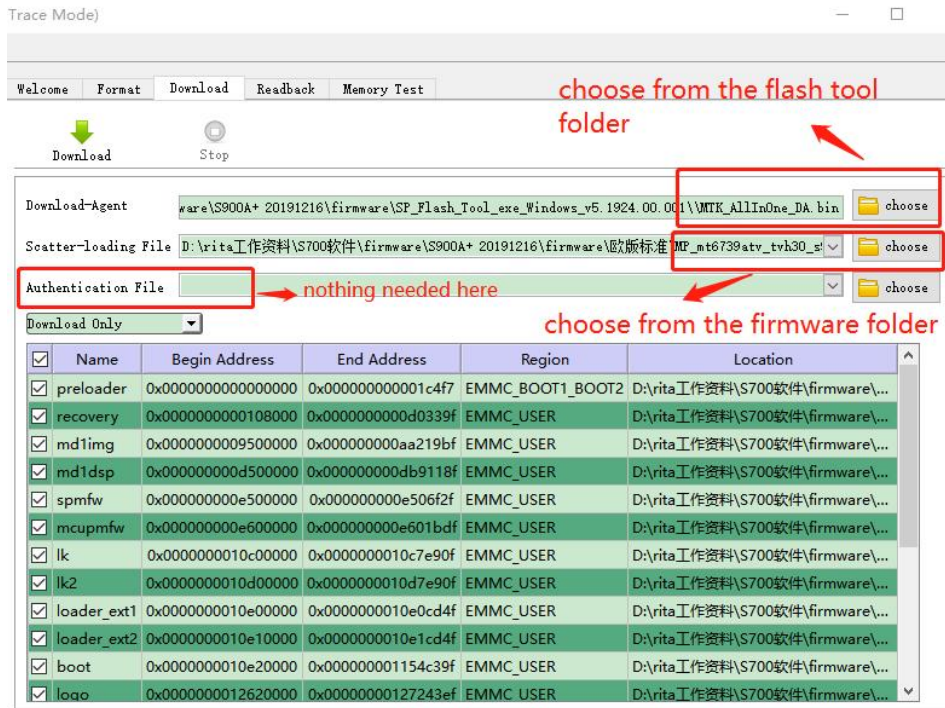
https://www.dropbox.com/s/pobzyuczazq23mdf/SP_Flash_Tool_exe_Windows_v5.1924.00.001.zip?dl=0



After unzip, it should be as follow



4. Open Flash Tool and select Scatter-loading File from firmware folder

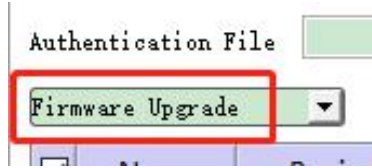


NOTE:

The first time to start up is a little longer after upgrading the firmware, about 3-5 minutes, as the system need to upload all the applications. It's totally normal.

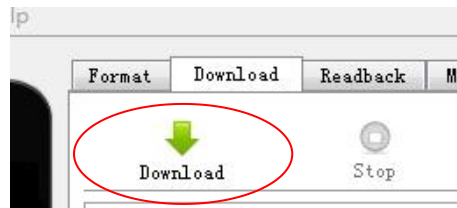


5. Choose “Firmware Upgrade” Mode



6. MUST keep unit is disconnected from PC and power off

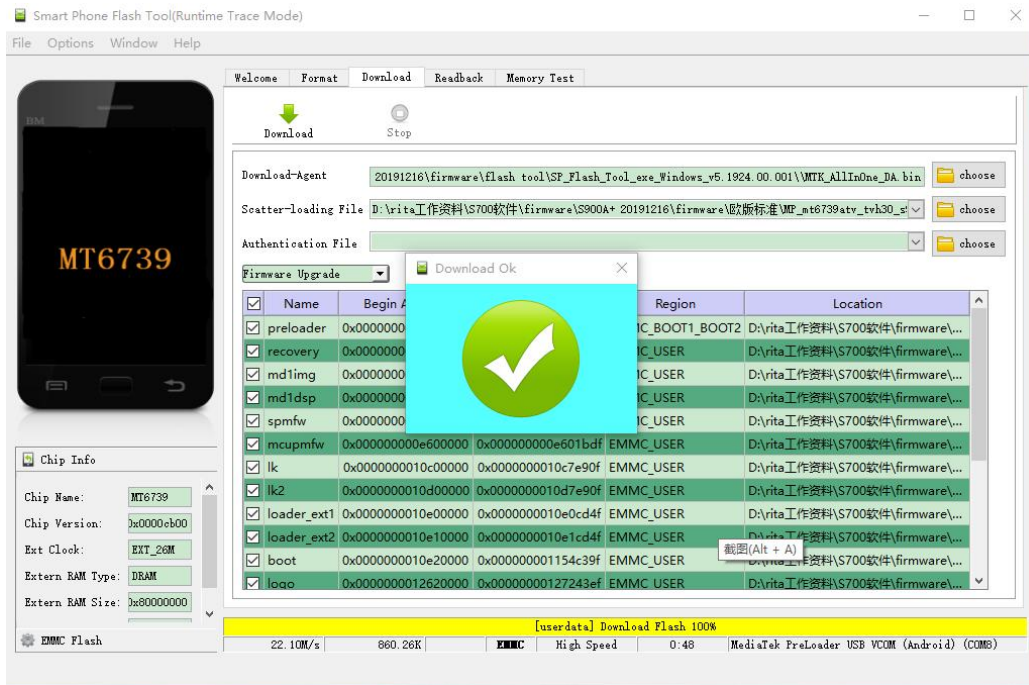
7. Click “Download” button then connect unit to PC with USB cable





BOXCHIP

8. Wait several minutes for the update to complete, you will see a popup message as below



NOTE:

- 1. If there is no response in the flash tool when the unit is connected to the PC, please remove the USB cable from the unit, wait a few seconds and then reconnect.**
- 2. If there is no response in the flash tool and you are using Windows 10 when the unit is connected to the PC, please wait a few more minutes than normal. Windows 10 sometimes takes longer for the firmware update tool to recognize the device. This is completely normal.**
- 3. DO NOT disconnect USB cable while the update is ongoing.**