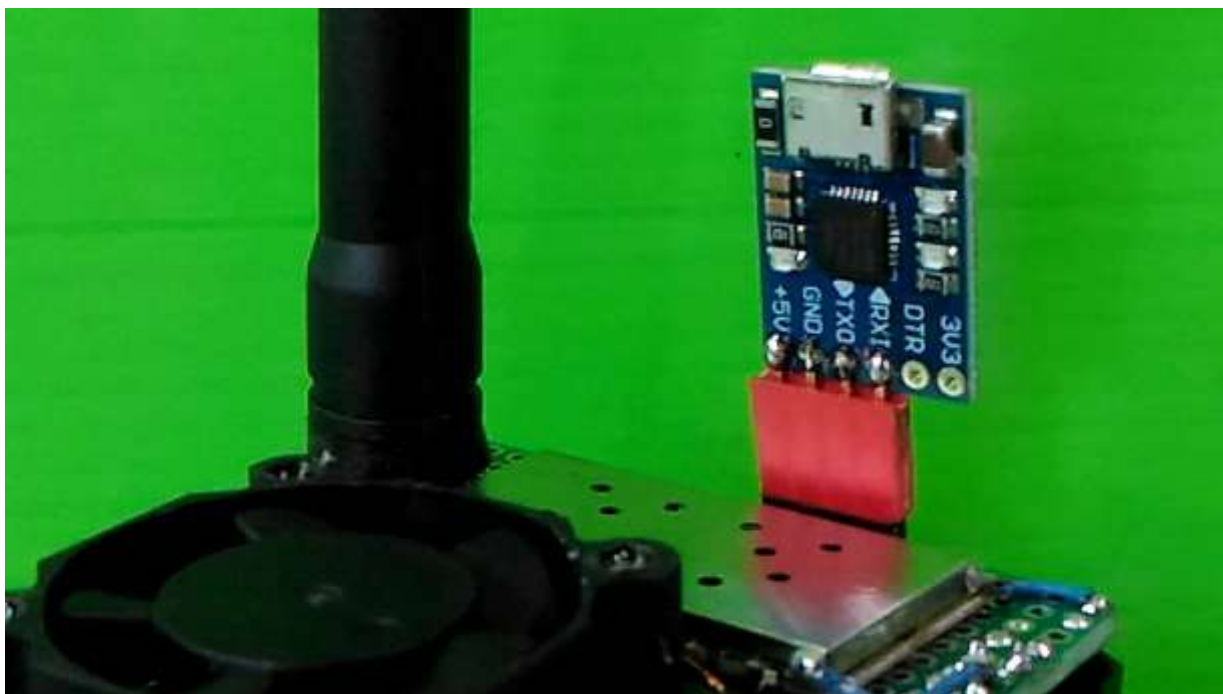
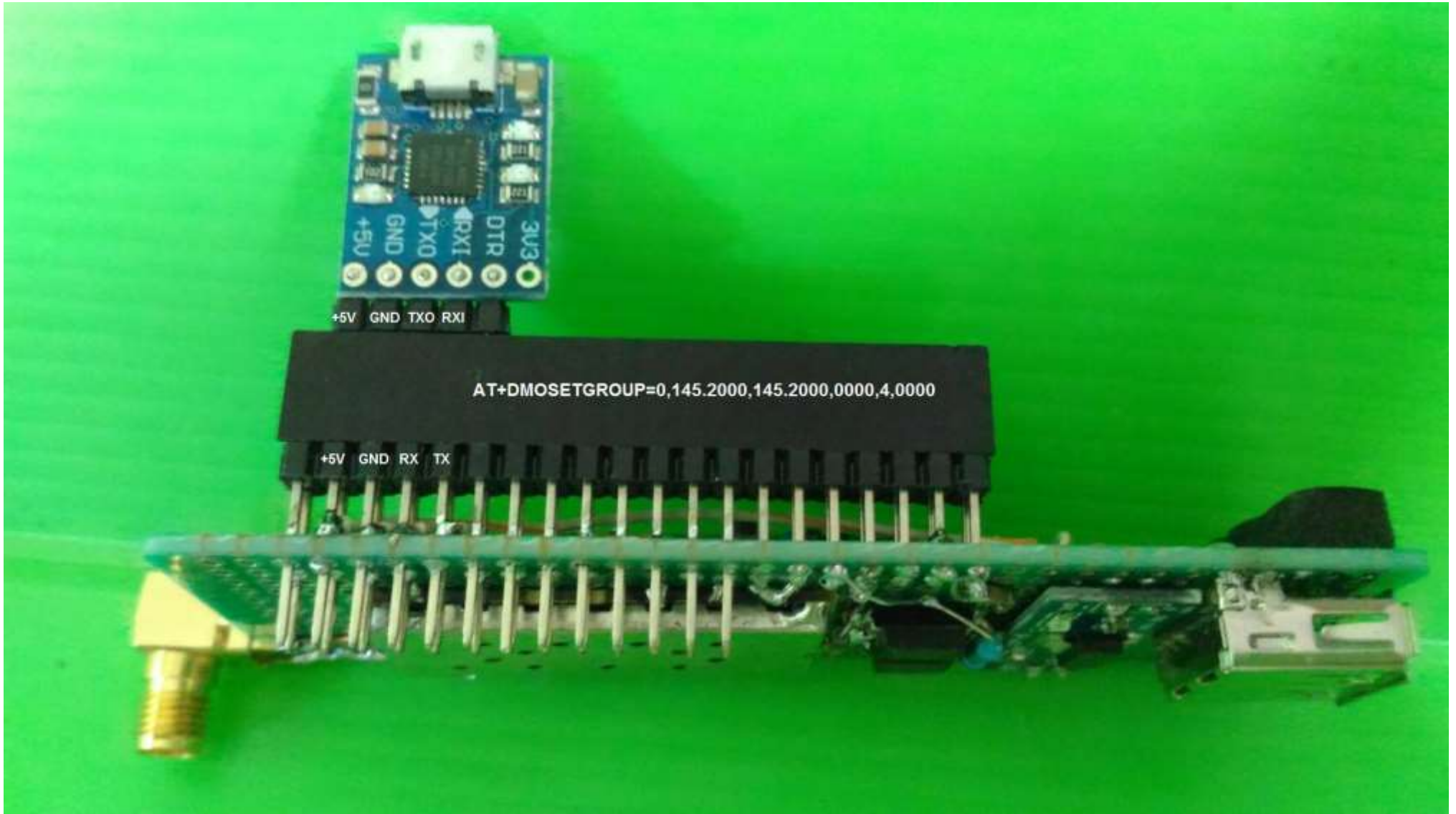
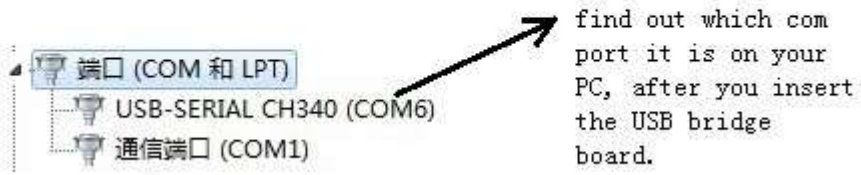


<http://43.228.85.69/files/AccessPort137.zip>

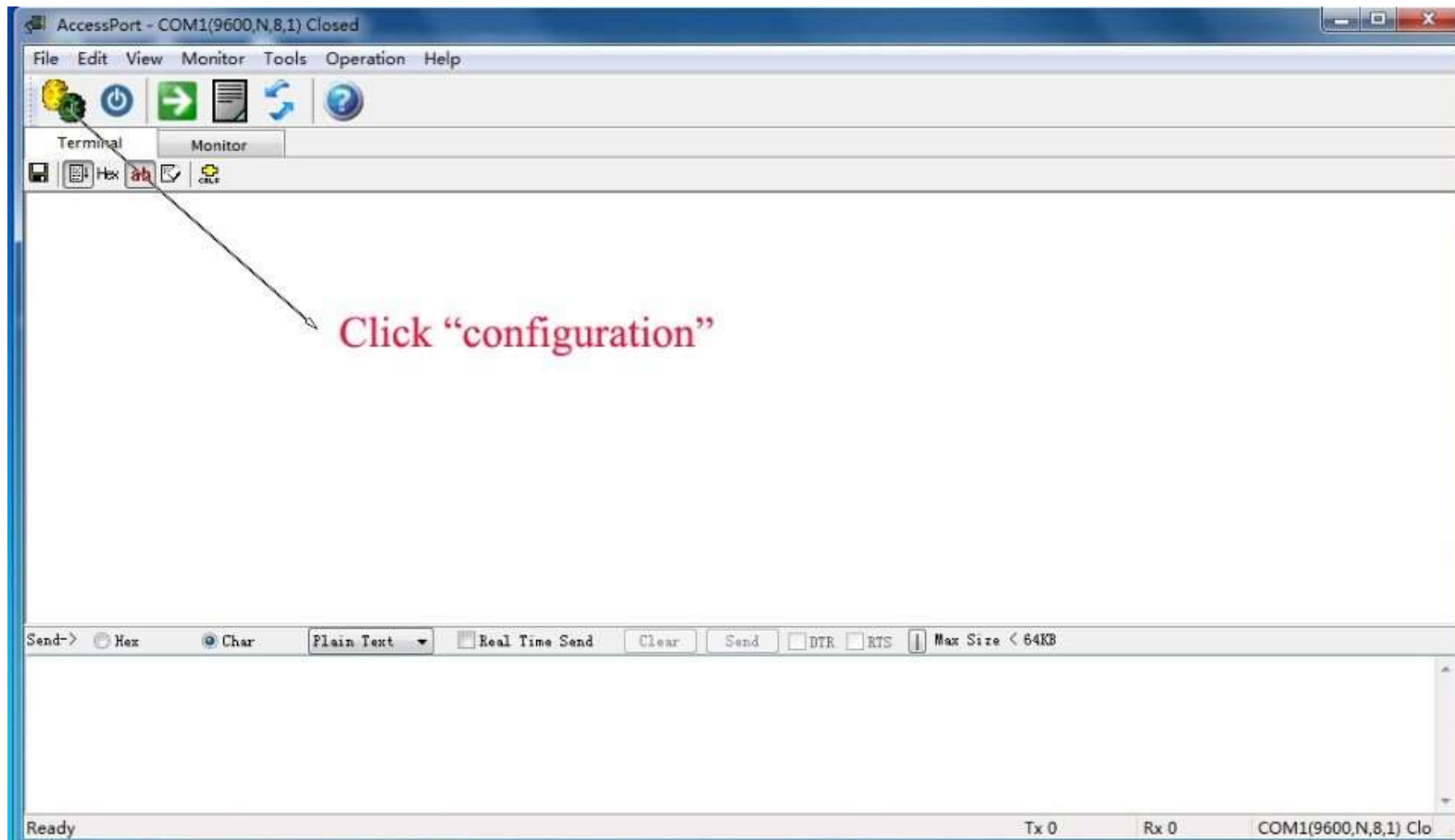




Find the correct COM on PC



Open AccessPort



Select the same COM as PC, below is like COM6 select

,8,1) Closed

Tools Operation Help

**Options**

- General
- Event Control
- Flow Control
- Timeout Control
- Monitor Control

**General**

Custom Baud Rate  
 Enable      9600

Serial Port Settings  
Port: COM1  
Baud Rate: 9600  
Parity Bit: NONE  
Data Bit: 8  
Stop Bit: 1  
Buffer Size: 8192

Send display  
 Char Format  
 Hex Format

Receive display  
 Char Format  
 Hex Format

AutoSend  
 Enable auto send      Cycle      1000 ms

Advanced  
 Auto open port when application start  
 Prompt for saving when application exit  
 Remind me when update is available

OK  
Cancel

Plain T

- General
- Event Control
- Flow Control
- Timeout Control
- Monitor Control

### General

Custom Baud Rate  
 Enable      9600

Serial Port Settings

Port: COM1

Baud Rate: COM1

Parity Bit: COM2

Data Bit: COM3

Stop Bit: COM4

Buffer Size: 8192

Send display

Char Format

Hex Format

Receive display

Char Format

Hex Format

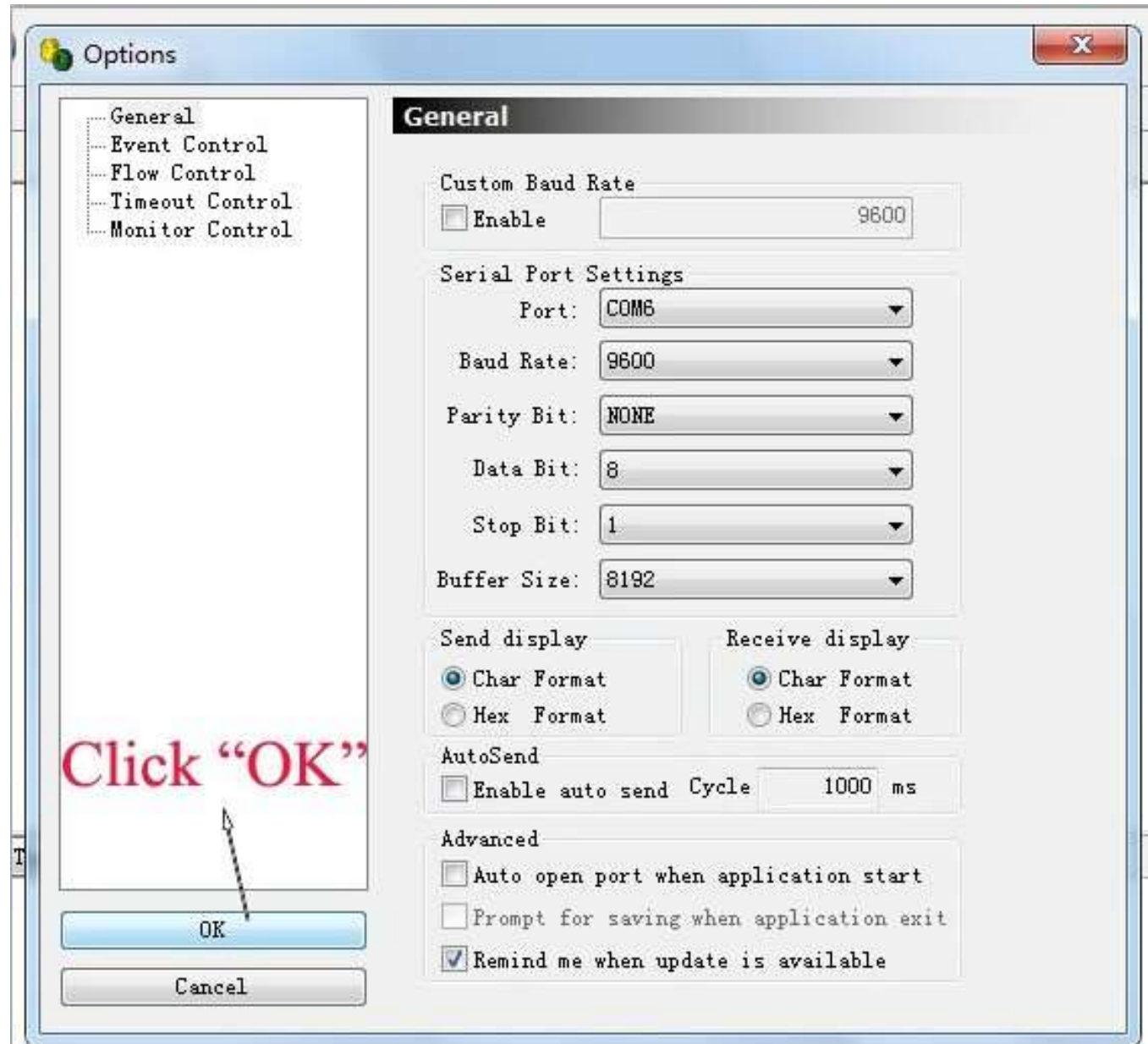
AutoSend

choose com6





Click "OK"



Order type

AT+DMOSETGROUP=0,145.7375,145.7375,0001,4,0001

AT+DMOSETVOLUME=4 (1-8)

AT+DMOSETGROUP=BW,TX\_F,RX\_F,Tx\_subtom,SQ,Rx\_subtom.

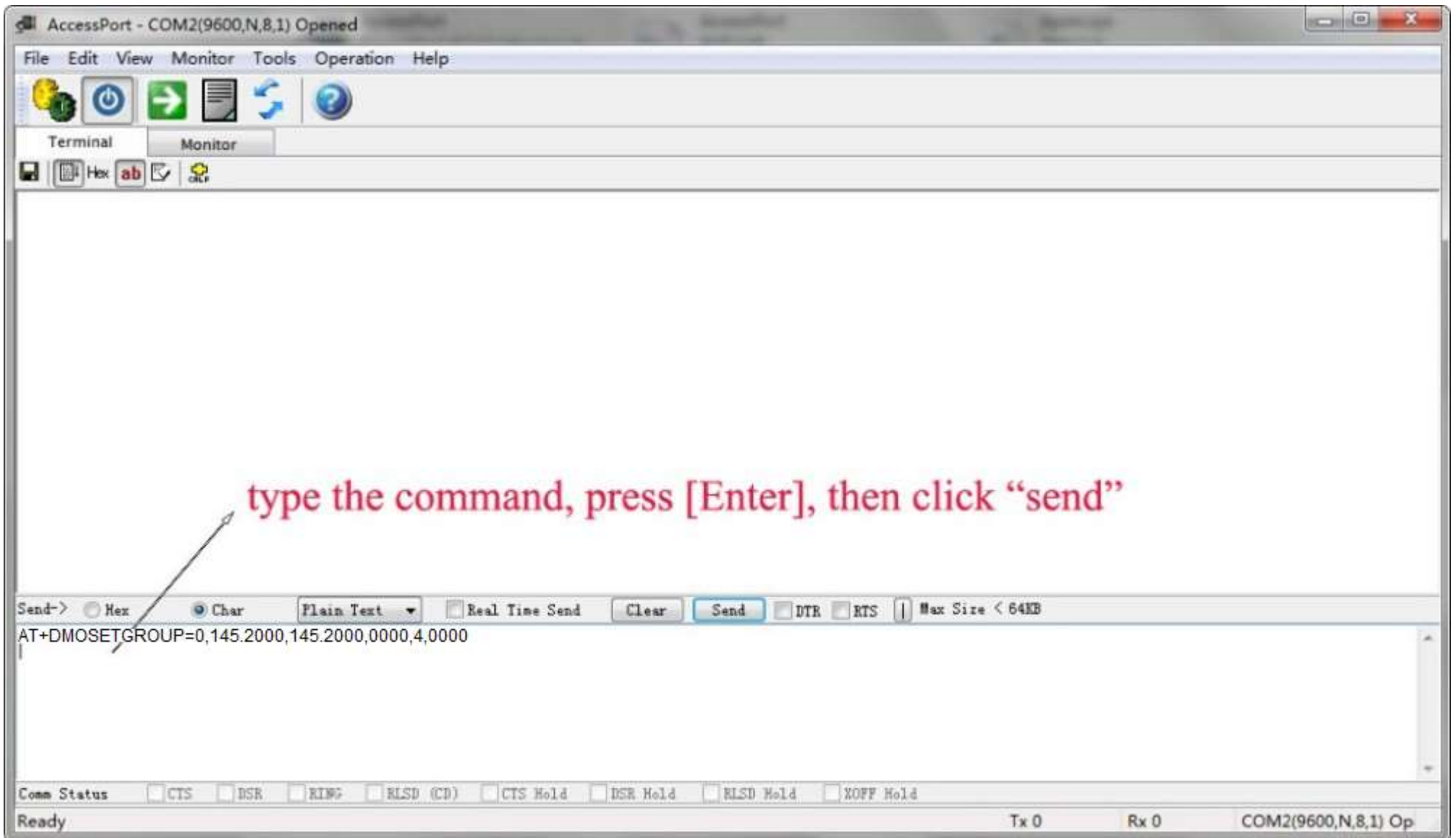
BW: 0=12.5khz (narrow) / 1:25khz (wide)

TX\_F e RX\_F: Frequencias de Transmiss?o e Recep??o, no formato 000.0000.

Tx\_subtom e Rx\_subtom: Subtom CTCS no formato 0000, de 0000 a 0038.

SQL: Squelch de 0 a 8.

0001-67.0, 0002-71.9, 0003-74.4, 0004-77.0, 0005-79.7, 0006-82.5, 0007-85.4,  
0008-88.5, 0009-91.5, 0010-94.8, 0011-97.4, 0012-100.0, 0013-103.5, 0014-107.2,  
0015-110.9, 0016-114.8, 0017-118.8, 0018-123.0, 0019-127.3, 0020-131.8,  
0021-136.5, 0022-141.3, 0023-146.2, 0024-151.4, 0025-156.7, 0026-162.2,  
0027-167.9, 0028-173.8, 0029-179.9, 0030-186.2, 0031-192.8, 0032-203.5,  
0033-210.7, 0034-218.1, 0035-225.7, 0036-233.6, 0037-241.8, 0038-250.3





The top of the window will show results just send.

